

RGE-GR 法兰型 (FL)

RGE-GR Flange series

产品特点

- FLA与FLB结构适用于重型机械领域
- 拆下法兰，径向安装，FL不移动主动端及从动端设备进行弹性体更换，拆卸方便
- 材质：部件4N钢 部件3Na 铸铁GGG-40
- 轴向插入装配，非常方便
- 成品孔径公差按照ISO标准H7，键槽公差按照DIN6885/1标准JS9
- 另有锥孔和英制孔



Characteristics:

Structure FLA and FLB are applied to heavy machinery industry;
 Easily dismantle: just remove flange for radial mounting and replace the spider without moving equipment at driving and driven ends;
 Materials: 4N Steel, 3Na Steel and GGG-40 cast iron;
 Easy assembly by inserting axially;
 Aperture tolerance: ISO H7; Keyslot tolerance: DIN6885/1 Js9;
 Taper or imperial bores are for option.

型号 Model RGE-□□-FL	部件4N 半成品或 成品孔 4N Semi -in finished/ finished Bore	基本尺寸 Fundamental Dimension												连接螺栓 Connecting Screw		
		D	DF	D4	d3	L1;L2	E	E1	t	b	L3;L4	LFA	LFB	MxL	数量Qty.	TANm
24	0-24	55	36	45	27	30	18	33	2	14	30.5	94	86	M5X16	8	10
28	0-28	65	42	54	30	35	20	39	2.5	15	35.5	110	100	M6X20	8	17
38	0-38	80	52	66	38	45	24	43	3	18	45.5	134	124	M8X22	8	41
42	0-42	95	62	80	46	50	26	48	3	20	51	150	138	M8X25	12	41
48	0-48	105	70	90	51	56	28	50	3.5	21	57	164	152	M8X25	12	41
55	0-55	120	80	102	60	65	30	60	4	22	66	192	176	M10X30	8	83
65	0-65	135	94	116	68	75	35	65	4.5	26	76	217	201	M10X30	12	83
75	0-75	160	108	136	80	85	40	75	5	30	86.5	248	229	M12X40	15	120
90	0-100	200	142	172	100	100	45	82	5.5	34	101.5	285	265	M16X40	15	295
100	0-110	225	158	195	113	110	50	97	6	38	111.5	320	295	M16X50	15	295
110	0-125	255	178	218	127	120	55	103	6.5	42	122	347	321	M20X50	15	580
125	0-145	290	206	252	147	140	60	116	7	46	142	400	370	M20X60	15	580
140	0-165	320	235	282	165	155	65	128	7.5	50	157.5	443	409	M20X60	15	580
160	0-190	370	270	325	190	175	75	146	9	57	177.5	501	463	M24X70	15	1000
180	0-220	420	315	375	220	195	85	159	10.5	64	198	555	515	M24X80	18	1000

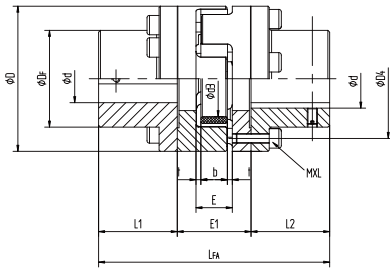
型号 Model RGE-□□-FL	部件4N 半成品或 成品孔 4N Semi -in finished/ finished Bore	基本尺寸 Fundamental Dimension														FD/FE				
		D	d3	L1	E	t	b	L5	L7	DA	D3	D4	LFC	LFF	DN3	DN4	M	螺栓数量 Qty.	LFE	LFD
24	0-35	55	27	30	18	2	14	1.5	8	80	55	65	56	34	36	45	M5	8	56	34
28	0-40	65	30	35	20	2.5	15	1.5	10	100	65	80	65	40	44	54	M6	8	65	40
38	0-48	80	38	45	24	3	18	1.5	10	115	80	95	79	44	54	66	M8	8	79	44
42	0-55	95	46	50	26	3	20	2	12	140	95	115	88	50	65	80	M8	12	88	50
48	0-62	105	51	56	28	3.5	21	2	12	150	105	125	96	52	75	90	M8	12	96	52
55	0-74	120	60	65	30	4	22	2	16	175	120	145	111	62	84	102	M10	8	111	62
65	0-80	135	68	75	35	4.5	26	2	16	190	135	160	126	67	96	116	M10	12	126	67
75	0-95	160	80	85	40	5	30	2.5	19	215	160	185	144	78	112	136	M12	15	144	78
90	0-110	200	100	100	45	5.5	34	3	20	260	200	225	165	85	145	172	M16	15	165	85
100	0-115	225	113	110	50	6	38	4	25	285	225	250	185	100	165	195	M16	15	185	100
110	0-125	255	127	120	55	6.5	42	4	26	330	255	290	201	107	180	218	M20	15	201	107
125	0-145	290	147	140	60	7	46	5	30	370	290	325	230	120	215	252	M20	15	230	120
140	0-160	320	165	155	65	7.5	50	5	34	410	320	360	254	133	245	282	M20	15	254	133

RGE-GR 法兰型 (FL)

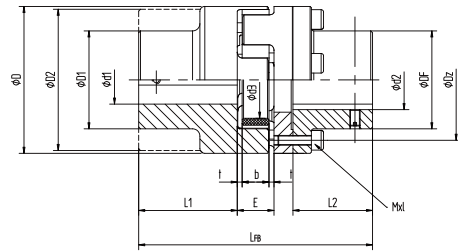
RGE-GR Flange series

选型举例：Example:

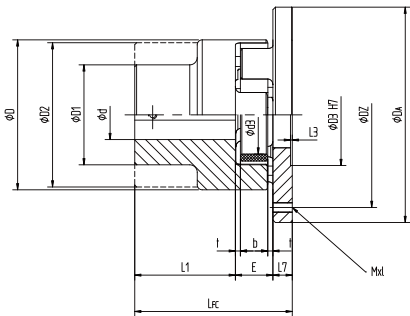
RGE28	C	FA	T	B	Ø 24	Ø 25	98
产品规格 Specification	铸件 Casting	结构 Structure	调质 Tempering	发黑 Blackening	孔径 Aperture	孔径 Aperture	弹性体硬度 Elastomer hardness



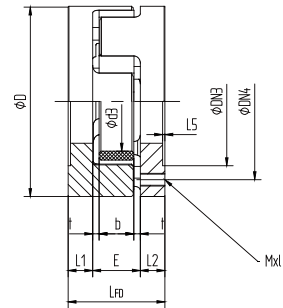
FA型/FA



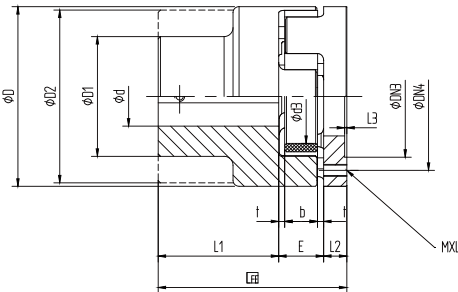
FB型/FB



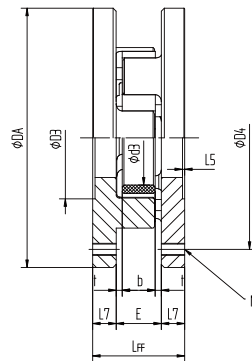
FC型/FC



FD型/FD



FE型/FE



FF型/FF